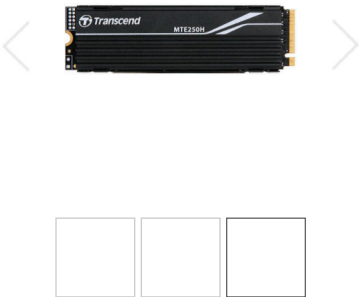


PCIe M.2 SSDs



PCIe SSD 250H

Exhibiting more than just ultra speeds, the MTE250H PCIe SSD delivers unbridled performance, low latency, and high stability for passionate gamers. Built with a PCI Express® Gen 4 x4 interface, 3D NAND flash, an 8-channel controller, a DRAM cache, and an aluminum heatsink, the MTE250H PCIe SSD is ready to put excellence in your hand.



Full speed ahead

Transcend's MTE250H PCIe SSD follows the latest NVMe 1.4 standard, supporting the PCIe™ Gen4 x4 interface, allowing four lanes to transmit and receive data simultaneously. Its 8-channel controller delivers sequential R/W up to 7,500/6,700 MB/s, and up to 540K IOPS, providing captivating performance and response times for your PC systems and game consoles.

Note: Performance is based on CrystalDiskMark v6.0.2.



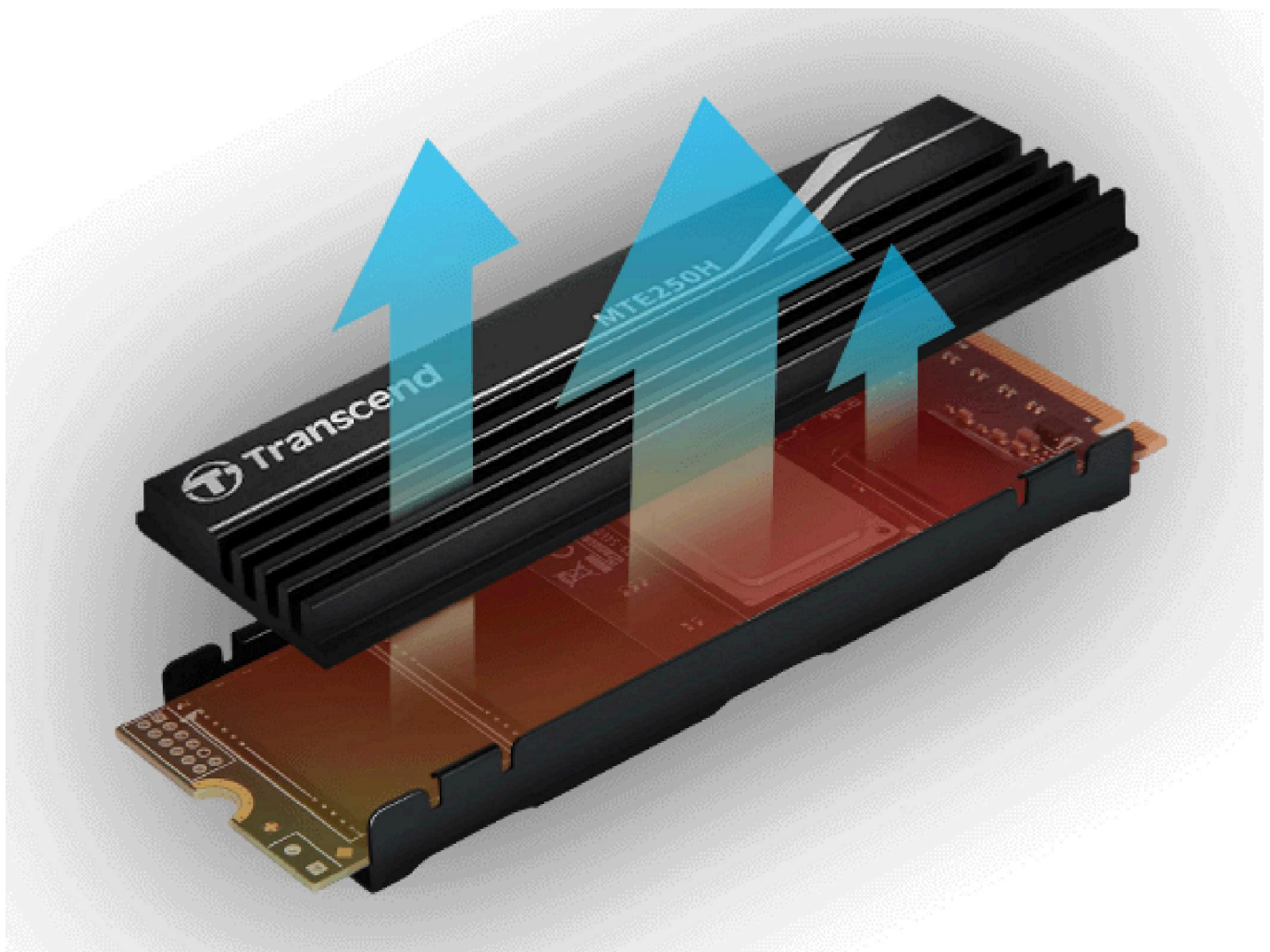
Level up with next-gen PCIe 4.0

Transcend's MTE250H features the new PCIe 4.0 specification, supporting a bandwidth of 16 GT/s per lane as opposed to 8 GT/s per lane for PCIe 3.0. Backwards compatible with PCIe 3.0, PCIe 4.0 unleashes higher transfer speeds and guarantees lower system latency. For advanced gamers, this means a more seamless and immersive experience.



Be the coolest

Transcend's MTE250H features a high efficiency aluminum heatsink to improve heat dissipation of the high performance, compact-sized SSD. The high thermal conductivity of aluminum and increased surface area reduce drive temperatures by 15%, allowing the SSD to maintain lower operating temperatures, even when you're maxing out performance on your desktop PC or game console.



Small in size, large in capacity

Featuring the M.2 2280 form factor, Transcend's MTE250H is available in capacities of up to 4TB, giving users plenty of space to store multiple blockbuster games.



Better endurance, higher reliability

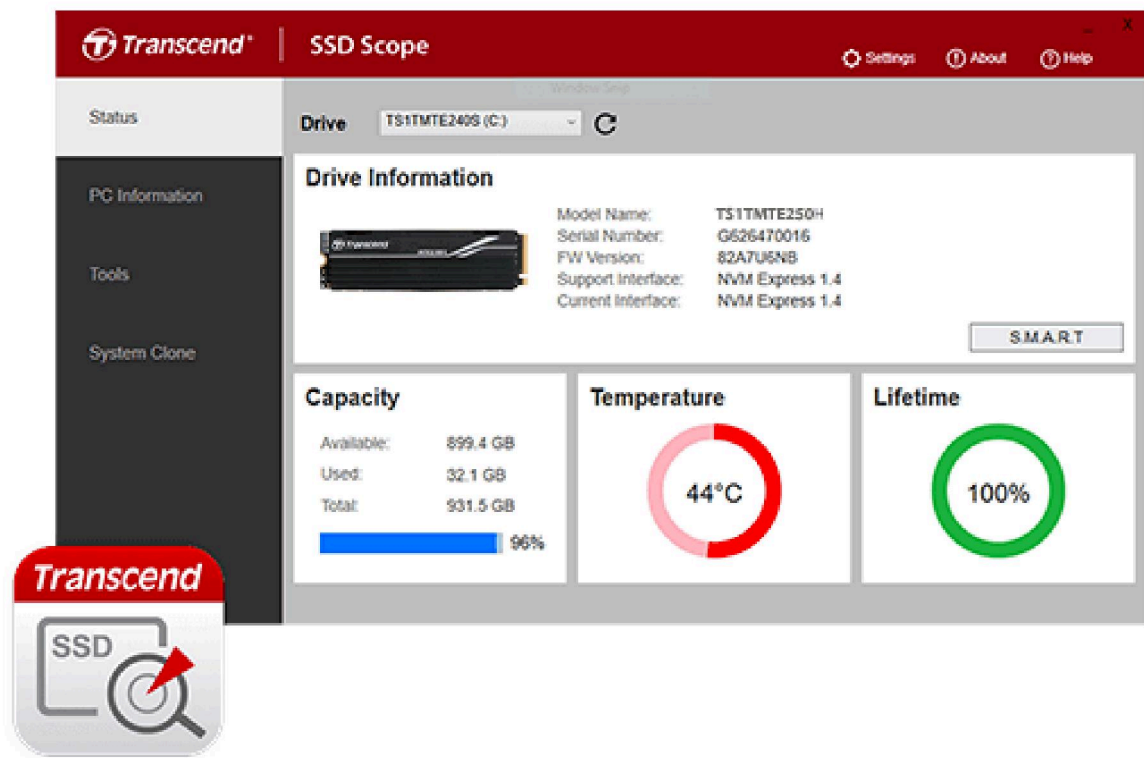
Transcend's PCIe SSD MTE250H is engineered with LDPC (Low-Density Parity Check) coding--a powerful ECC algorithm--to keep data secure. With its built-in dynamic thermal throttling mechanism, operating temperature is precisely monitored and controlled for the MTE250H, delivering superior endurance and stability for high-end applications.



SSD Scope software

Transcend's SSD Scope is an advanced, user-friendly software that makes it easy to monitor the condition and optimize the performance of your Transcend SSD, ensuring that it remains healthy and continues to run fast and error-free.

[Learn more \(/support/software/ssd-scope\)](https://support/software/ssd-scope)



Guaranteed quality

The PCIe SSD MTE250H is covered by a five-year limited warranty. To ensure the utmost level of quality, Transcend SSDs undergo rigorous testing at all stages of production, including tests for vibration, temperature and humidity, speed, and functionality.

Specifications



Appearance

Dimensions	Double-sided 80.0 mm x 23.1 mm x 9.2 mm (3.15" x 0.9" x 0.36")
Weight	34 g (1.19 oz)
Type	M.2 2280

Interface

Bus Interface	NVMe PCIe Gen4 x4
---------------	-------------------

Storage

Flash Type	3D NAND flash
Capacity	1 TB / 2 TB / 4 TB

Operating Environment

Operating Temperature	0°C (32°F) ~ 70°C (158°F)
Operating Voltage	3.3V±5%

Performance

Sequential Read/Write (CrystalDiskMark)	4 TB	Up to 7,500/6,700 MB/s
	2 TB	Up to 7,100/6,500 MB/s
	1 TB	Up to 7,200/6,200 MB/s
4K Random Read/Write (IOMeter)	4 TB	Up to 540,000/440,000 IOPS
	2 TB	Up to 530,000/420,000 IOPS
	1 TB	Up to 530,000/420,000 IOPS
Terabytes Written (TBW)	4 TB	3120 TBW
	2 TB	1560 TBW
	1 TB	780 TBW
Mean Time Between Failures (MTBF)	3,000,000 hour(s)	
Drive Writes Per Day (DWPD)	0.43 (5 yrs)	
Note	<ul style="list-style-type: none">Speed may vary due to host hardware, software, usage, and storage capacity.The workload used to rate DWPD may be different from your actual workload, which may vary due to host hardware, software, usage, and storage capacity.Terabytes Written (TBW) expresses the endurance under the highest capacity.Some motherboards only provide PCIe x2 connections for the M.2 slot, creating a bottleneck on even the fastest drives.	

Warranty

Certificate	CE / UKCA / FCC / BSMI / KC / RCM
Warranty	Five-year Limited Warranty
Warranty Policy	<ul style="list-style-type: none">Please click here (/Warranty) for more information about the Transcend Warranty Policy.Warranty does not apply when SSD Scope's lifetime indicator displays 0% within the warranty coverage.Removal of heatsink may cause damage to the SSD not covered under Transcend's warranty policy.

System Requirement

Operating System	<ul style="list-style-type: none">Microsoft Windows 7 or laterLinux Kernel 2.6.31 or later
Note	Systems for use with the PCIe M.2 SSD must have an M.2 connector with only an M key. B-key connectors are not compatible. Improper insertion may lead to damage. Please click here (/Support/FAQ-1206) for more information.

Technology

S.M.A.R.T.	✓
Advanced Garbage Collection	✓
RAID Engine	✓
LDPC Coding	✓
DRAM Cache	✓

Awards



(<https://www.taiwanexcellence.org/tw/award/product/1130411>)

TAIWAN EXCELLENCE 2024

Taiwan Excellence
Taiwan



(<https://nl.hardware.info/artikel/10533/review-transcend-250s250h-ssds-stap-richting-topniveau#besprokenproducten>)

Hardware Info Excellent Award

Hardware.info
Netherlands

Order Information

1TB

TS1TMTE250H

2TB

TS2TMTE250H

4TB

TS4TMTE250H



Product Sheet

(https://CDN.transcend-info.com/products/images/modelpic/1286/Transcend-MTE250H_4T.pdf)



Support

(/support/product/internal-ssd/mte250h)

Explore more



Get ahead. Up your game.

(/Article/gamingconsole)

Consumer Products

- [Internal SSDs \(/product/internal-ssd\)](/product/internal-ssd)
- [Portable SSDs \(/product/portable-ssd\)](/product/portable-ssd)
- [External Hard Drives \(/product/external-hard-drive\)](/product/external-hard-drive)
- [Personal Cloud Storage \(/product/personal-cloud\)](/product/personal-cloud)
- [Dashcams \(/product/dashcam\)](/product/dashcam)
- [Body Cameras \(/product/body-camera\)](/product/body-camera)
- [Memory Cards \(/product/memory-card\)](/product/memory-card)
- [USB Flash Drives \(/product/usb\)](/product/usb)
- [DRAM Modules \(/product/dram-module\)](/product/dram-module)
- [Card Readers, DVD Writers & Accessories \(/product/card-reader-accessory\)](/product/card-reader-accessory)
- [Customized Solutions \(/products/oem.aspx\)](/products/oem.aspx)

Embedded Solutions

- [Embedded SSD Solutions \(/Embedded/Product/ssd\)](/Embedded/Product/ssd)
- [Embedded Flash Solutions \(/Embedded/Product/flash\)](/Embedded/Product/flash)
- [Embedded Memory Cards \(/Embedded/Product/memory-cards\)](/Embedded/Product/memory-cards)
- [Embedded DRAM Modules \(/Embedded/Product/modules\)](/Embedded/Product/modules)
- [Technologies \(/Embedded/Technologies\)](/Embedded/Technologies)
- [Applications \(/Embedded/Applications\)](/Embedded/Applications)
- [Software Solutions \(/Embedded/Software\)](/Embedded/Software)
- [Resource Download \(/embedded/download\)](/embedded/download)

Support

- [Product Support \(/support/service\)](/support/service)
- [Software Download \(/support/software\)](/support/software)
- [Compatibility \(/support/compatibility\)](/support/compatibility)
- [Warranty Policy \(/warranty\)](/warranty)
- [Warranty Check \(/support/verification\)](/support/verification)
- [Where to Buy \(/support/buy\)](/support/buy)
- [Partner Center \(/partnercenter/\)](/partnercenter/)

About Us

- [Company Profile \(/about/company-profile\)](/about/company-profile)
- [Advantage \(/about/advantage\)](/about/advantage)
- [Awards \(/about/awards\)](/about/awards)
- [Investor Relations \(/about/investor-relations\)](/about/investor-relations)
- [Shareholder Services \(/about/shareholder-services\)](/about/shareholder-services)
- [Sustainable Development \(/about/sustainable-development\)](/about/sustainable-development)
- [Social Responsibility \(/about/social-responsibility\)](/about/social-responsibility)
- [Press \(/about/press\)](/about/press)
- [Green Initiatives \(/about/green-initiatives\)](/about/green-initiatives)
- [Contact Us \(/support/contact\)](/support/contact)